

The SnowClear™ System Overview

A patent-pending electronic snow melting system designed to make snow melting viable for more than just the affluent

After two years of development, was invented by Dave Pieroni to meet the demand for lower-cost, easier to install radiant heating systems

Simple to install, less expensive and works automatically

Saves end-user up to 50% versus alternative radiant heating solutions

Can be installed under concrete, pavers, asphalt and any other type of pavement

SnowClear™ Panels come in a variety of standard sizes and can also be customized to fit an area – also come with 10 feet of cold lead, which can be changed to fit specifications

Control Box Dimensions (can be flush mounted or recessed): 22" x 15" x 4"

Aerial Sensor Dimensions: 4" x 4" x 3"

PreMesh Mats

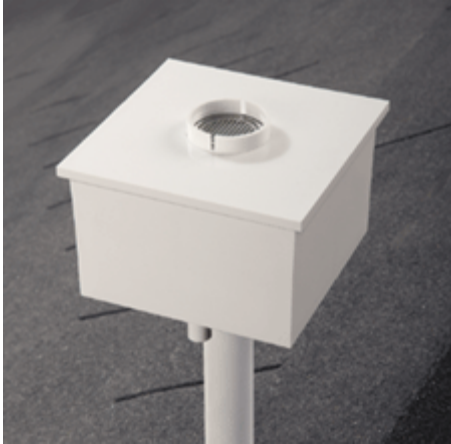
Come in standard sizes for concrete forms but also are available to heat any size area, from a path to a hot tub to large loading docks to accessibility ramps



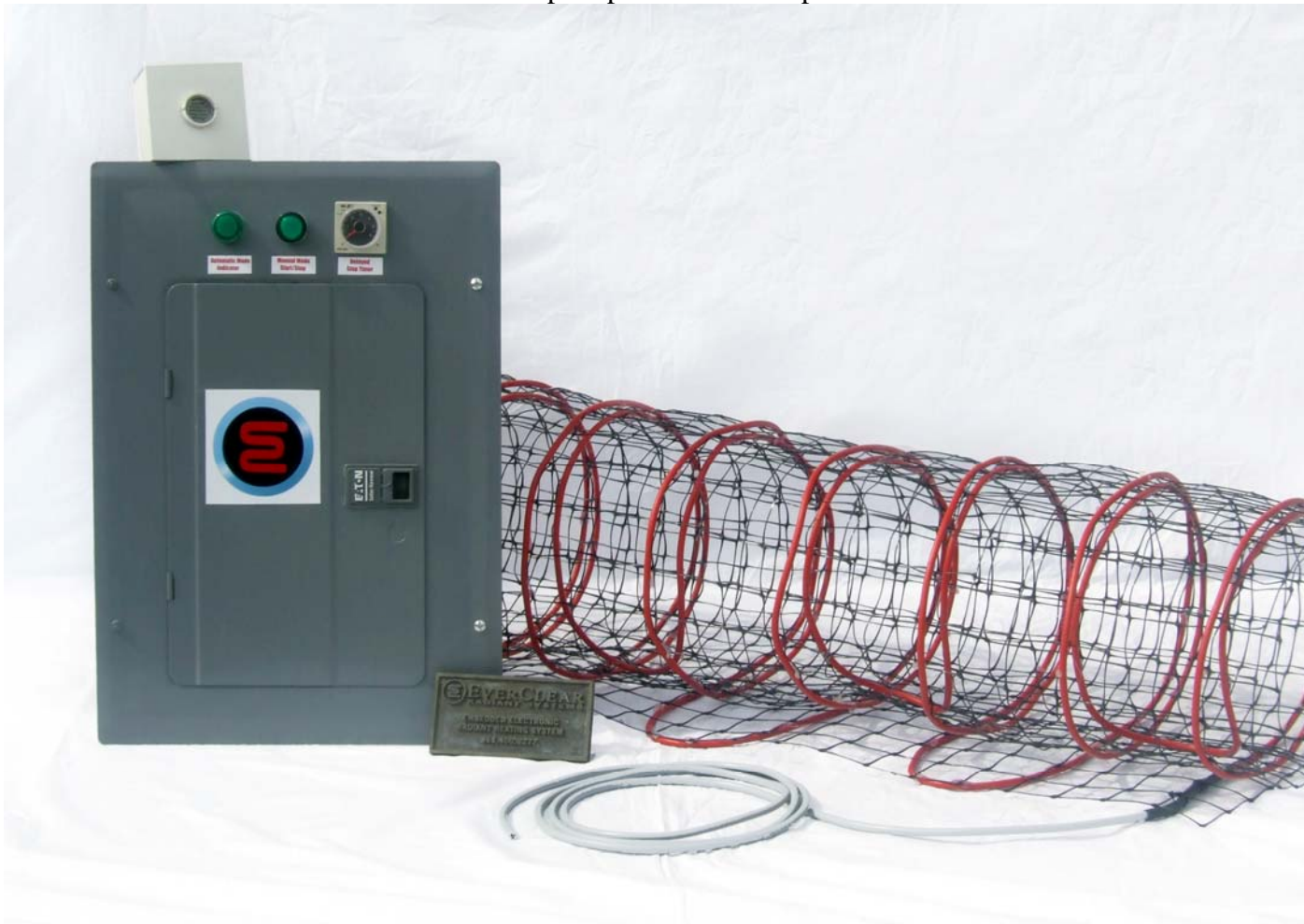
Above: Dual-conductor SureMelt™ cable

Controls

The electronic energy management system consists of three main parts: an aerial sensor, NEMA control box and GFIC.



Above: Aerial-mounted sensor that measures precipitation and temperature



Above: Electronic energy management package that is the heart of the SnowClear™ System

EverClear Radiant Systems™

132 Timber Meadows Parkway
O'Fallon, MO 63368
Phone: 800-400-ECRS (2377)
Fax: 314-561-0987
info@ecrsmail.com
www.everclearradiantsystems.com